

# 84501

Smart Garage Opener with Integrated Dual LED  
Lighting System, Ultra-Quiet Belt Drive

---



**PRODUCT GUIDE**

**LiftMaster**

POWERED BY myQ.

# 84501

Smart Garage Opener with  
Integrated Dual LED Lighting System,  
Ultra-Quiet Belt Drive

---



## Popular features

### Quiet and smooth operation

Best-in-class belt drive system and DC motor provides reliable operation and lasting service.

### myQ® Connected

Control, secure and monitor the garage from the myQ app anytime, from anywhere.

### Secure in-garage delivery

Enables Amazon Key In-Garage Delivery - free for Amazon Prime members.

### Security+ 2.0®

Safeguards garage access by sending a new code with every click of the remote.

### Invisible light beam system

Auto-reverses the garage door if there is an obstruction.

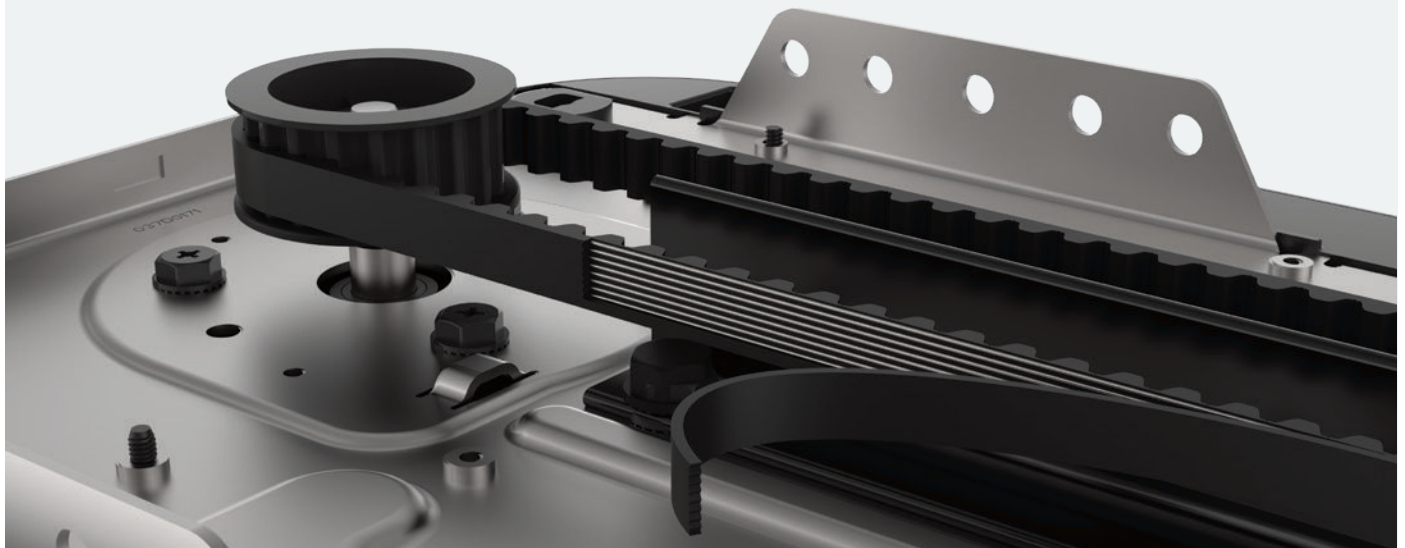
### Posilock® protection

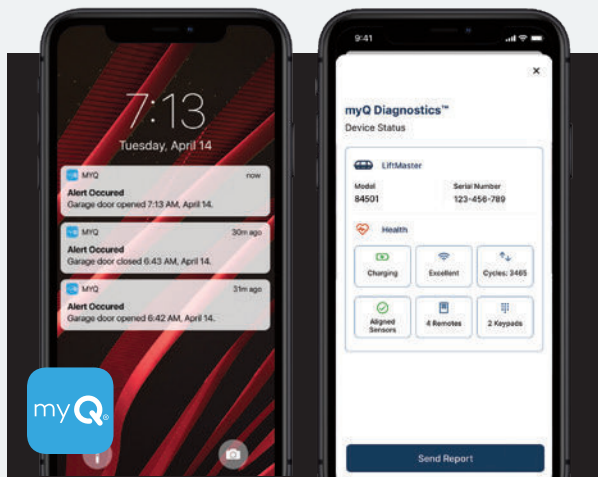
Electronically protects against forced openings of the door.

---

## Engineered for silence

The 84501 opener uses an extra-strong, steel-reinforced rubber belt to open the garage door quietly, keeping adjoining living spaces virtually silent while open and close events occur.





### Do more with myQ

Use the myQ app to control, secure and monitor your garage and conveniently share and manage access to your home without sharing passcodes or keys. Also, take the hassle out of service repair and easily connect to a trusted Dealer through the myQ app.



### Integrated dual LED lighting system

Increase the functionality of the garage and never change a garage light bulb again. Dual lighting system provides 1,500 lumens of long-lasting LED light that brightens high traffic areas of the garage.

### In the box

893LM



#### 3-Button Remote Control

Operates up to 3 openers or myQ light accessories.

882LMW



#### Multi-Function Control Panel

Operates the garage door opener and lights from inside the garage.

## Specifications

### Motor

12V DC, 53 RPM, automatic thermal protection

### Mechanics

- Steel chassis, T-rail and trolley, full reinforced belt drive mechanism (16:1 gear reduction and adjustable door arm)
- Auto-force adjustment for changing weather and environmental conditions
- Electronic limits for easy setup
- DC Wi-Fi logic board with built-in surge suppressor (for replacement logic boards, order part 050DCTB)

### Power

120V AC, 60 Hz voltage, 6A current rating, UL Listed, 4' power cord (3-prong)

### Speed

7.2" per second upward, 7.2" per second downward

### Lighting

Dual light lens LED - 1,500 lumens

### Dimensions

Opener head: 10.5" L x 12.72" W x 8.185" H

*Note: when both decorative doors are open, the width of the opener is 30".*

Rail Options:	7' (2777BD)	8' (2778BD)	10' (2770BD)
Installed Length:	127"	139"	163"
Max Opening:	7' 6"	8' 6"	10' 6"

Headroom clearance required: 2"

### Mounting

Side-to-Side

### Warranties

Lifetime: Motor and Belt

1 Year: Parts, Accessories and LED

### Security+ 2.0

Radio controls:

Operating range ~200'; Operating temperature: -40F to 150F; 3-Button Remote Control (893LM), Remote Control: 310, 315 and 390 MHz Tri-Band (Tri-Band on Security+2.0 coding only, premium remote control is backwards compatible to all LiftMaster® openers manufactured since January, 1993); Garage Door Opener: frequency agile on 310, 315 and 390 MHz; Anti-burglary coding.

Encrypted controls:

Multi-Function Control Panel (882LMW); Program remote controls, maintenance alert system, easy Wi-Fi set up.

### myQ Radio

902-928 MHz 50-Channel FHSS (frequency hopping spread spectrum); Provides 2-way communication from garage door opener and myQ accessories; Enables monitoring and control of garage door openers and lighting controls via smartphone, tablet or computer.

### HomeLink® compatible (version 4.0 or higher)

May require an external adapter depending on the model and year of vehicle. Visit [HomeLink.com](http://HomeLink.com) for additional information.

### Carton 1 shipping details

Dimensions: 18.5" x 12" x 11.31"

Contents: Garage Door Opener Head (84501), Multi-Function Control Panel (882LMW), 3-Button Remote Control (893LM), The Protector System® Safety Reversing Sensors  
Weight: 19.4 lbs.

### Carton 2 shipping details

Dimensions: 10'4" x 5" x 5" (for 7' rail)

Contents: Assembled Solid-Steel Belt T-Rail  
Weight: 17 lbs.



## For purchase and professional install

Visit [LiftMaster.com](http://LiftMaster.com)

### For partners

Orders: 800.282.6225 | Support: 800.528.2806 | Self service: [LiftMasterTraining.com](http://LiftMasterTraining.com)

© 2021 The Chamberlain Group, Inc. All Rights Reserved.

LiftMaster, the Liftmaster logo, myQ and the myQ logo are registered trademarks of The Chamberlain Group, Inc. UL® and the UL logo are trademarks of UL LLC. Wi-Fi® is a registered trademark of Wi-Fi Alliance. HomeLink® and the HomeLink House® logo are registered trademarks of Gentex Corporation.  
LMGDENPG84501